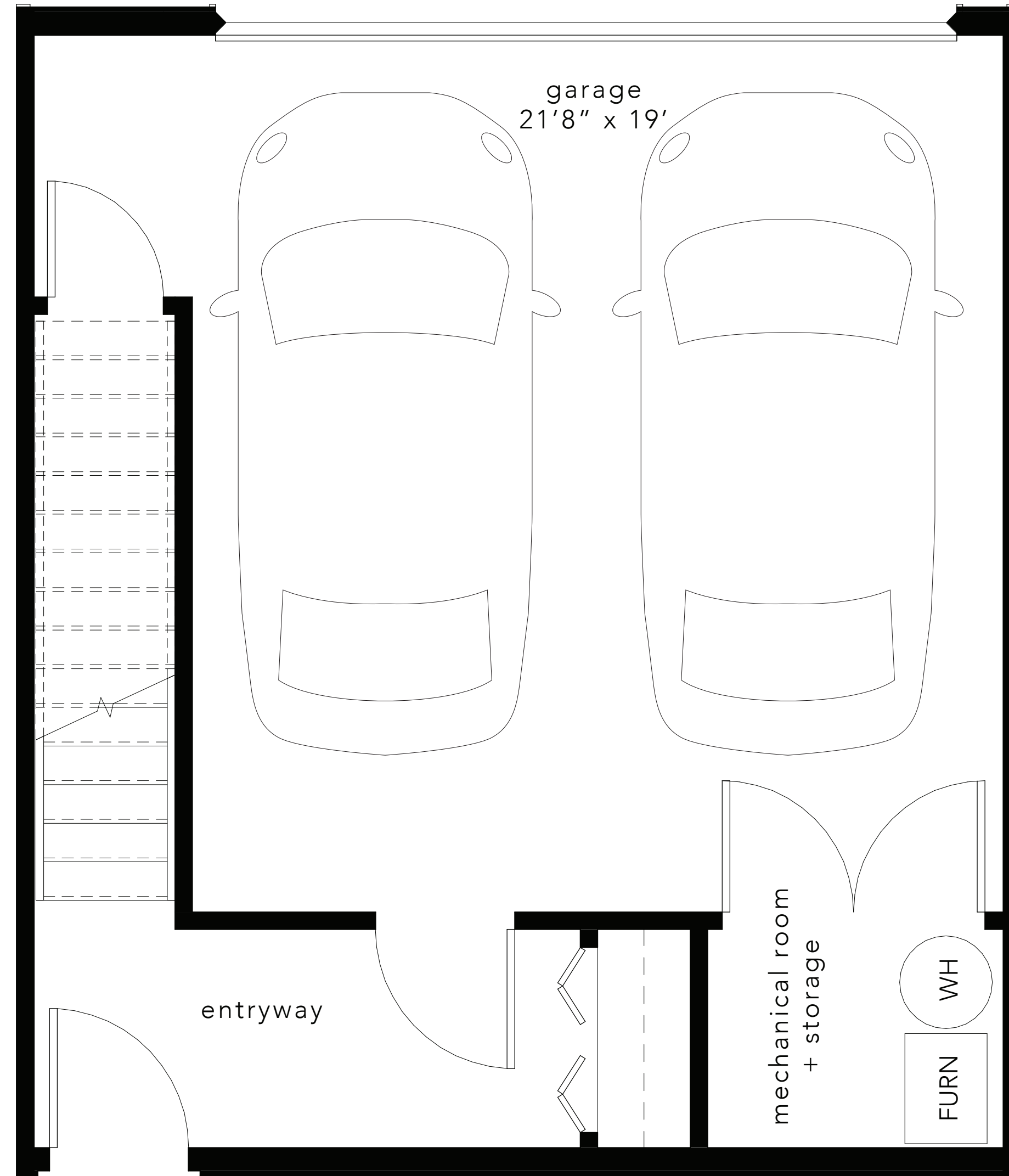


# birch

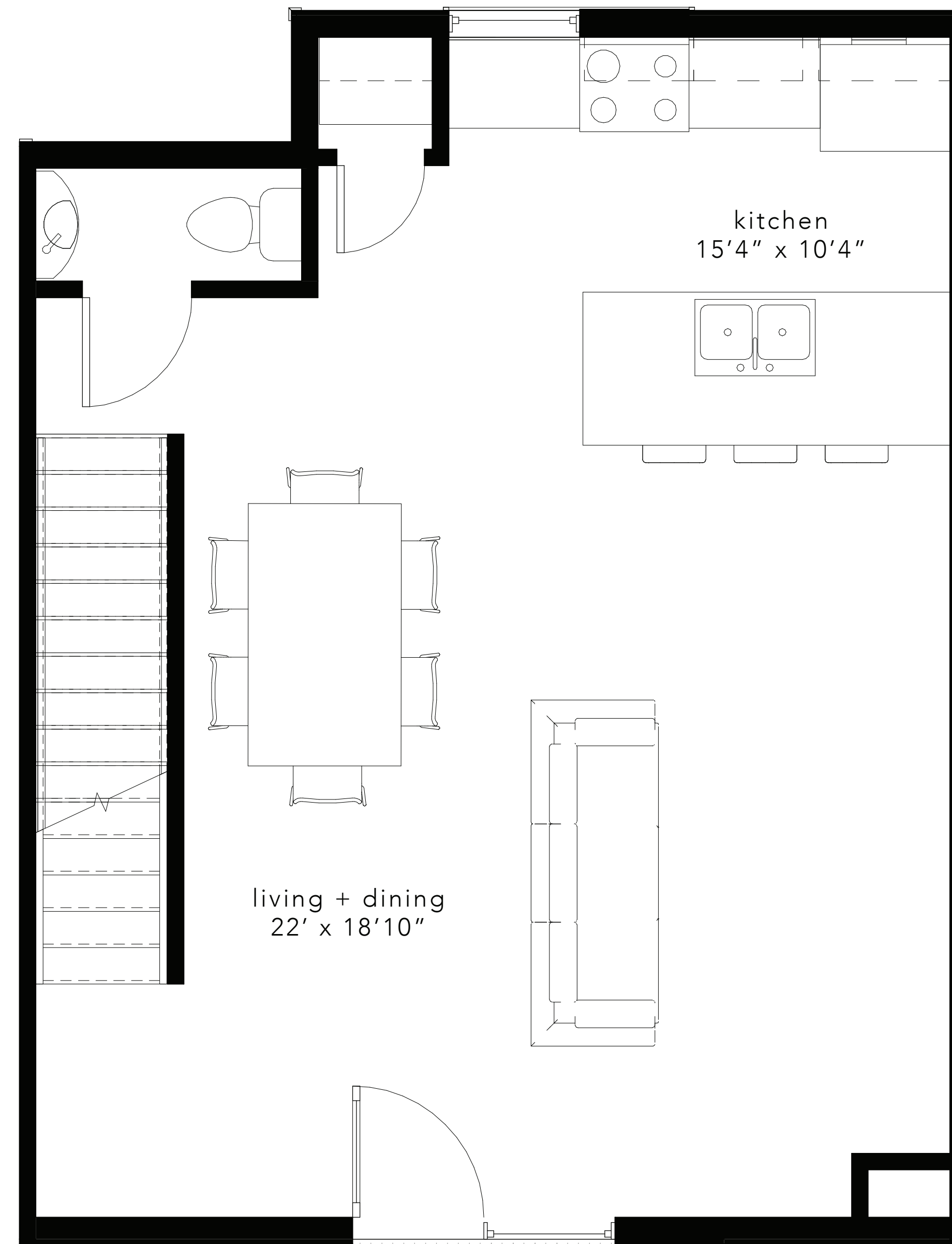
2 bed // 2.5 bath // 1,298 sqft // 2 car garage



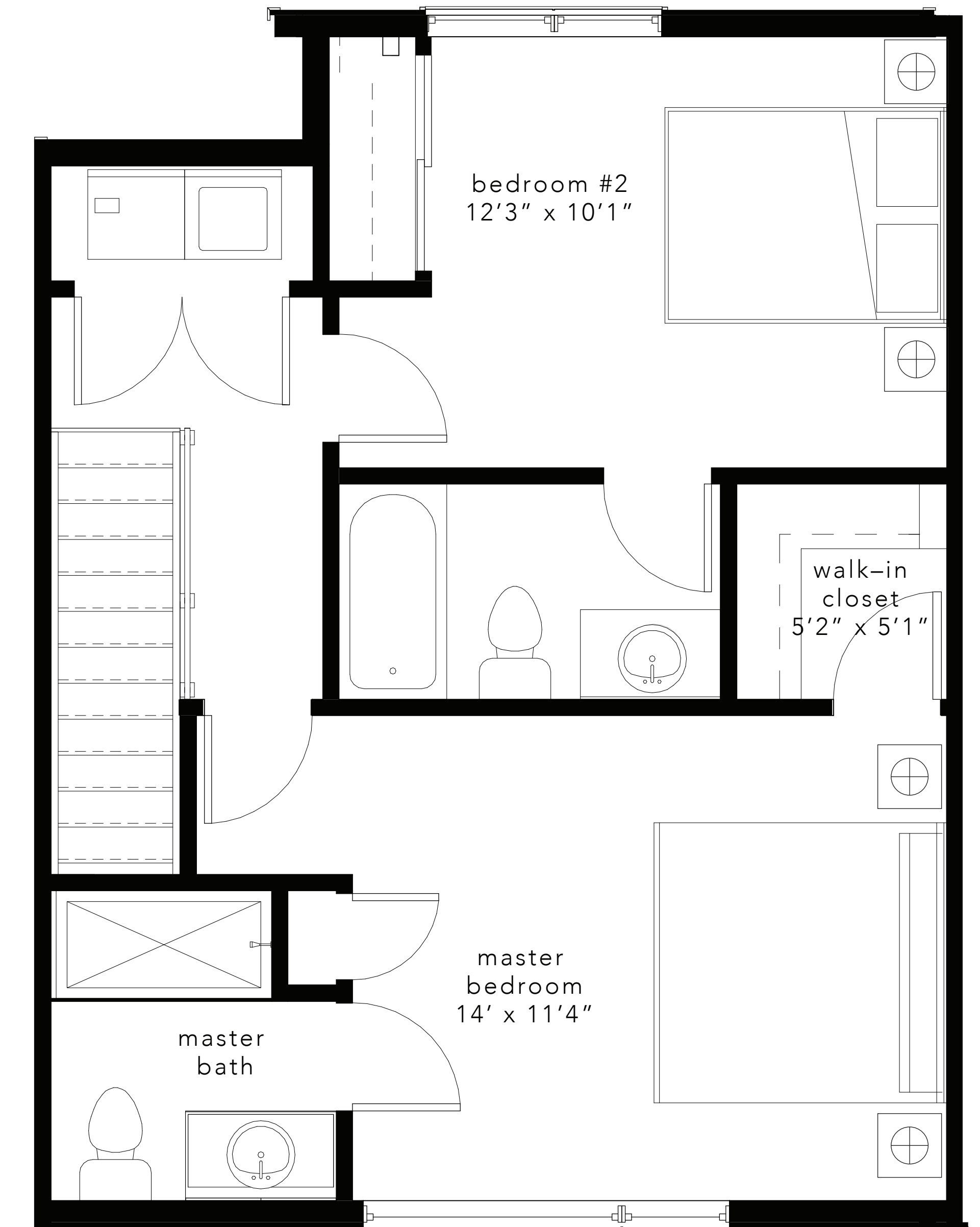
PARKVIEW  
RESIDENCES



1ST FLOOR



2ND FLOOR



3RD FLOOR

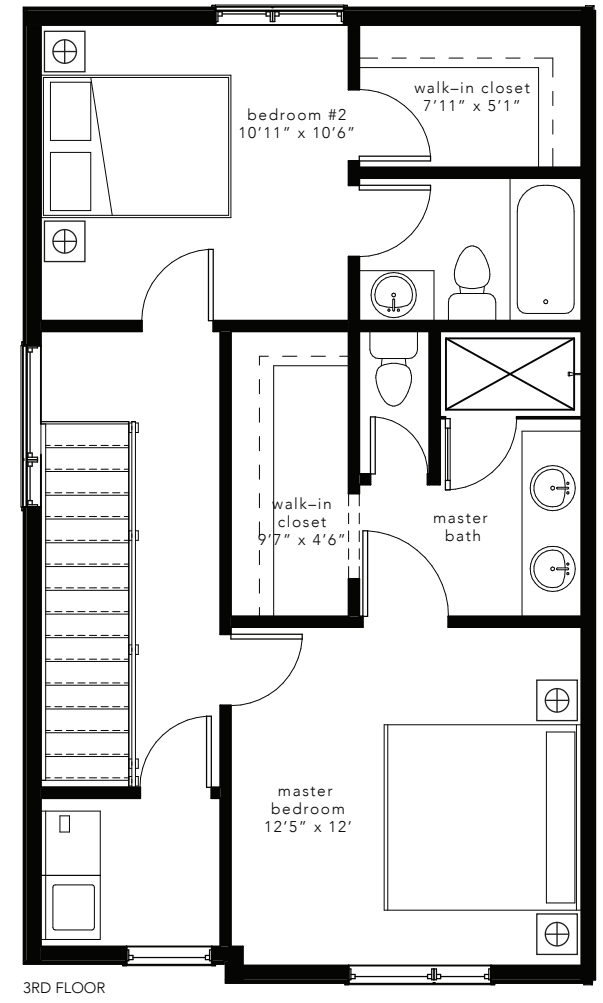
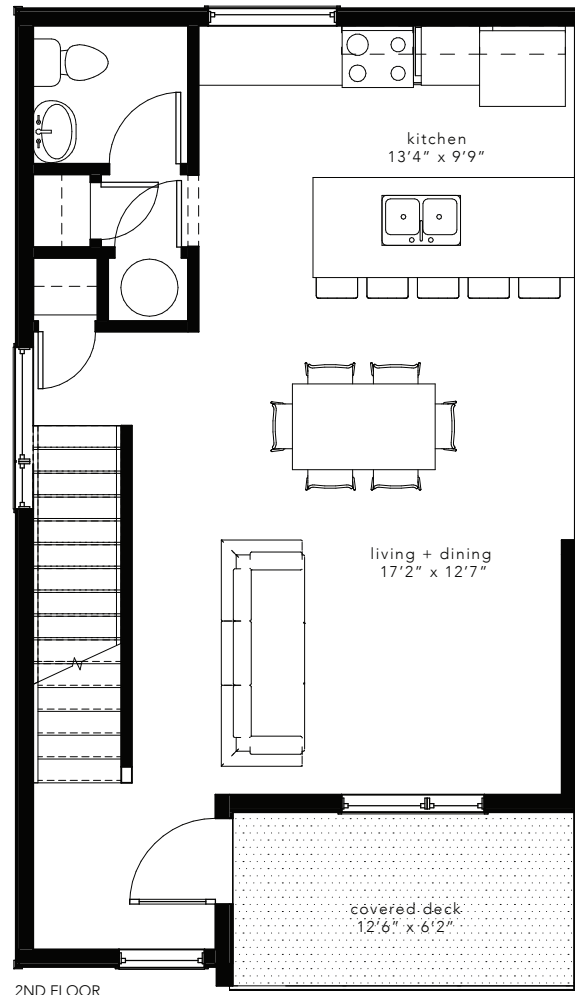
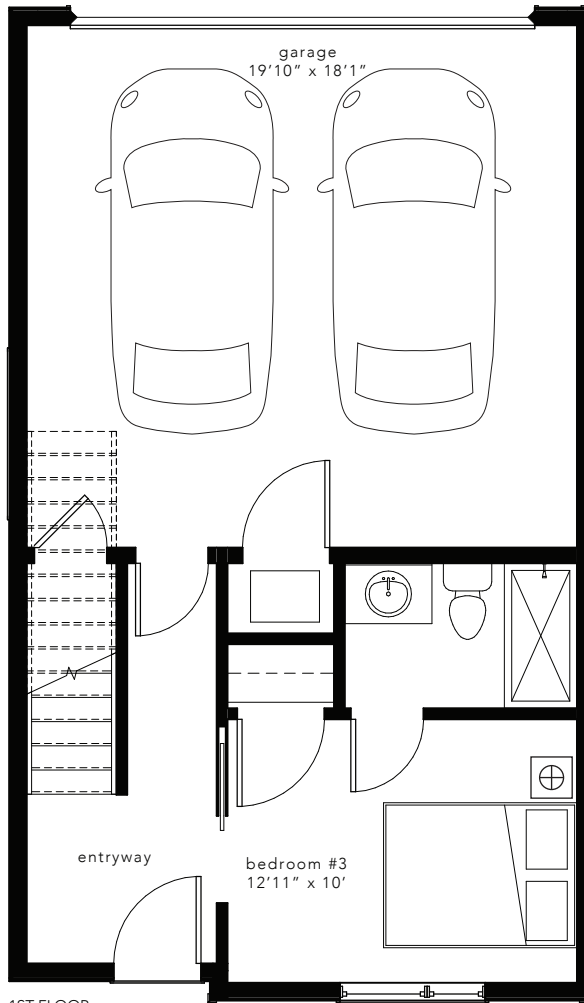
units // 1158, 1190, 1200, 1210, 1220

**milehimodern**  
the coolest homes in town

\*This material is based upon information that we consider reliable, but because it has been supplied by third parties we cannot represent its accuracy. Plans and finishes are subject to change, including price, or withdrawal without notice. All dimensions and square footages are approximate based upon plans provided. ©MileHiModern All Rights Reserved, MileHiModern® is a licensed trademark, An Equal Opportunity Company, Equal Housing Opportunity. 🏠

# cedar

3 bed // 3.5 bath // 1,550 sqft // 2 car garage



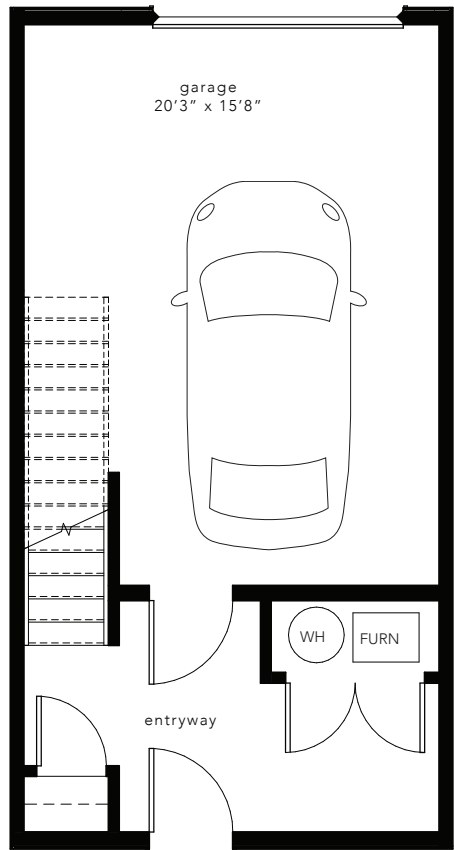
units // 1162, 1163, 1165, 1166, 1169, 1170, 1174, 1175, 1176, 1177, 1180, 1181

**milehimodern**  
the coolest homes in town

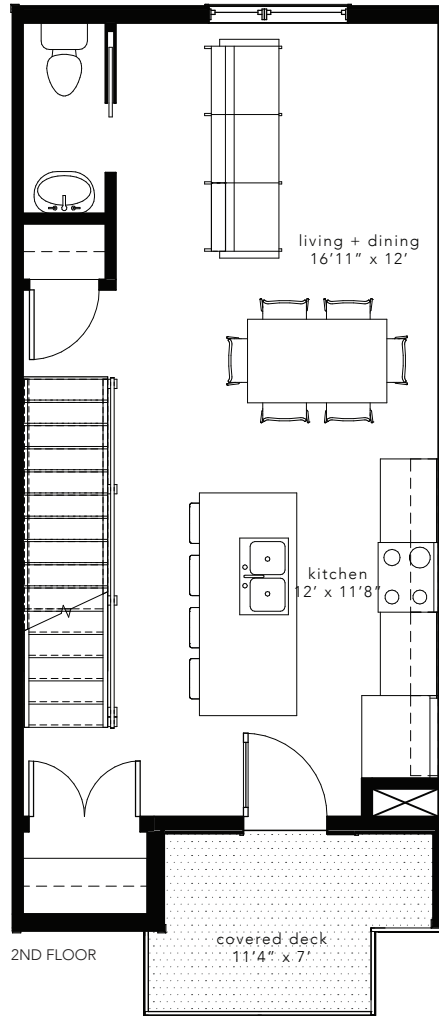
\*This material is based upon information that we consider reliable, but because it has been supplied by third parties we cannot represent its accuracy. Plans and finishes are subject to change, including price, or withdrawal without notice. All dimensions and square footages are approximate based upon plans provided. ©MileHiModern All Rights Reserved, MileHiModern® is a licensed trademark, An Equal Opportunity Company, Equal Housing Opportunity. 🏠

elm

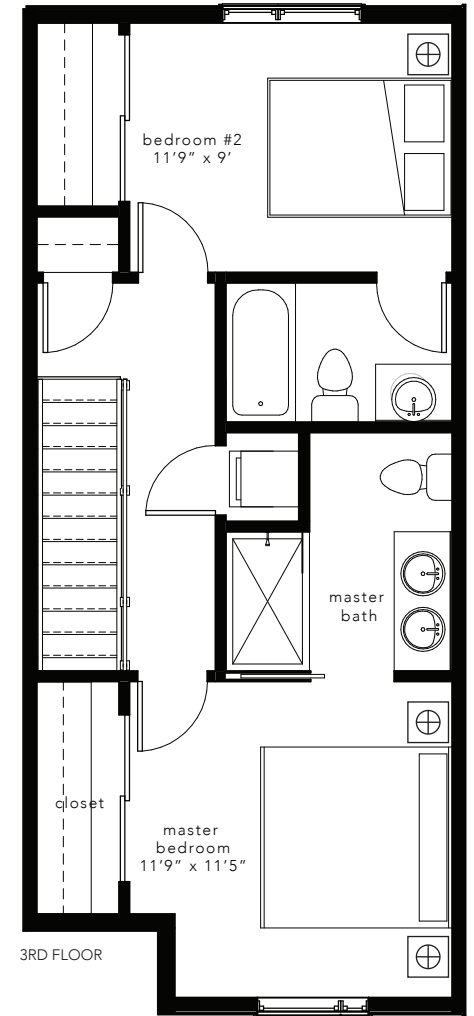
2 bed // 2.5 bath // 1,188 sqft // 1 car garage



1ST FLOOR



2ND FLOOR



3RD FLOOR

units // 1156, 1160, 1167, 1168, 1178, 1179, 1188, 1192, 1198, 1202, 1208, 1212, 1218, 1222

milehimodern  
the coolest homes in town

\*This material is based upon information that we consider reliable, but because it has been supplied by third parties we cannot represent its accuracy. Plans and finishes are subject to change, including price, or withdrawal without notice. All dimensions and square footages are approximate based upon plans provided. ©MileHiModern All Rights Reserved, MileHiModern® is a licensed trademark, An Equal Opportunity Company, Equal Housing Opportunity. 🏠

# aspen

2 bed // 2 bath // 1,365 sqft // 2 car garage



units // 1154, 1164, 1171, 1172, 1182, 1183, 1186, 1194, 1196, 1204, 1206, 1214, 1216, 1224

**milehimodern**  
the coolest homes in town

\*This material is based upon information that we consider reliable, but because it has been supplied by third parties we cannot represent its accuracy. Plans and finishes are subject to change, including price, or withdrawal without notice. All dimensions and square footages are approximate based upon plans provided. ©MileHiModern All Rights Reserved, MileHiModern® is a licensed trademark, An Equal Opportunity Company, Equal Housing Opportunity. 🏠